

Comara sysCut

The expert system for production optimization



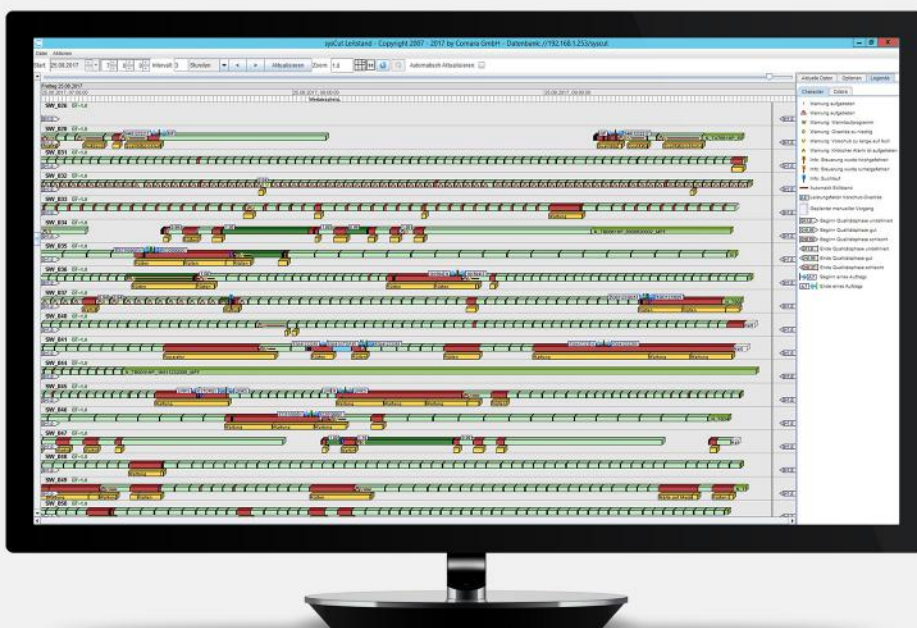
Input / output

The ratio between input and output, or productivity, is one of the most important reference values in a company.

But what is the actual situation? Where can we begin to make improvements? What are the relevant influencing factors and variables? How can the complex relationships you deal with on a daily basis be made transparent? What will actually be achieved as a result of actions taken?

Comara sysCut facilitates the automatic acquisition and structuring of process data from the cutting process. Thanks to direct access to the CNC controls as a data supplier, a vast quantity of information is tapped into and made available to the right area within the organisation.

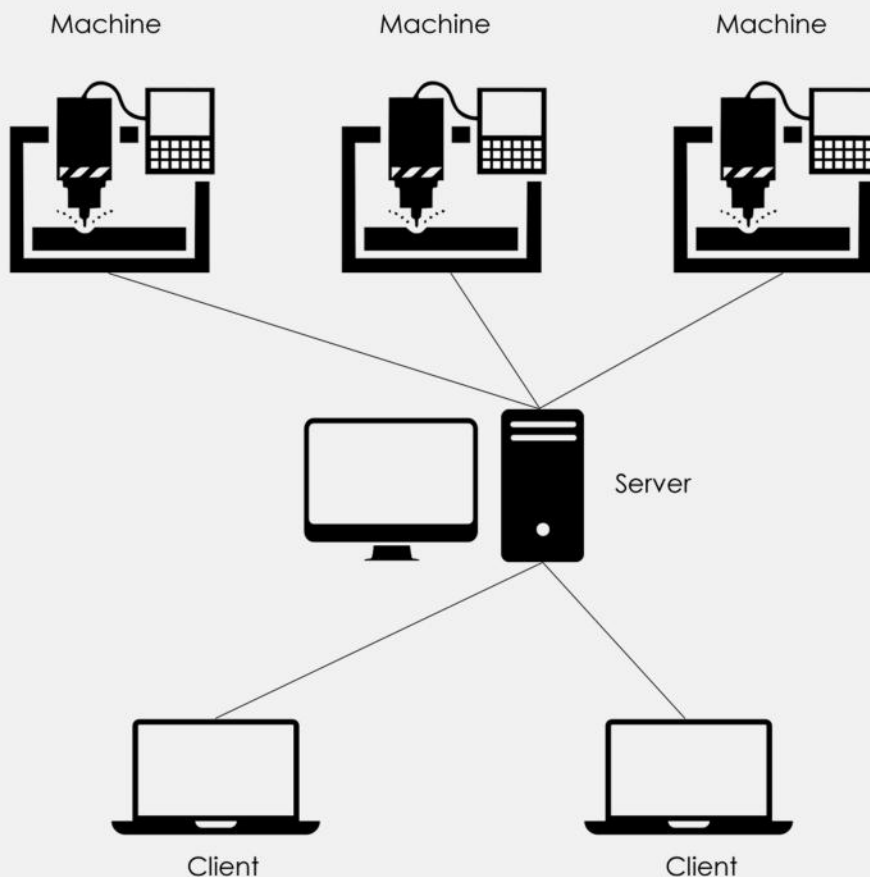
From a company view at an abstract level, down to detailed views of individual machines and tools.



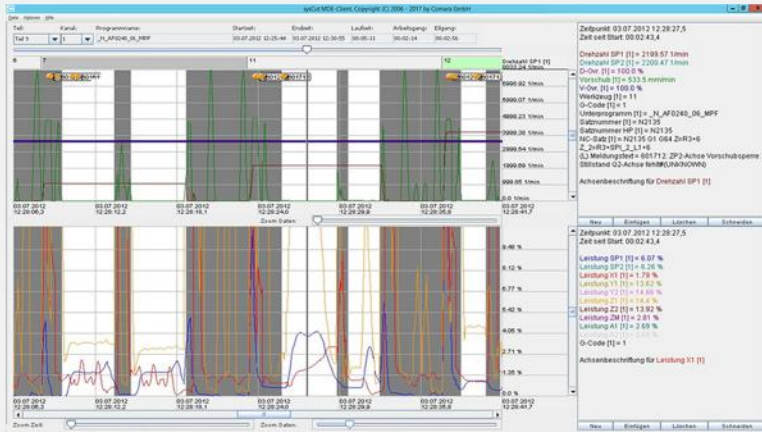
Visualize, analyze, optimize

To achieve maximum effect when striving to reduce manufacturing costs and boost productivity, it is necessary to start at the very beginning of the production process, ideally on the production line.

Get information about the production status and history at a glance. You can track what, when, where, how and in what time span production ran or when it will become active, down to the smallest detail. Analysis and reports focus your attention on the key indicators of past, present and future company performance.



Analyse, design, control



Touch-centric analysis of processing peaks, potential for optimisation, wear and tear and process reliability can be performed at the touch of a button, thereby helping to cut production start-up times considerably.

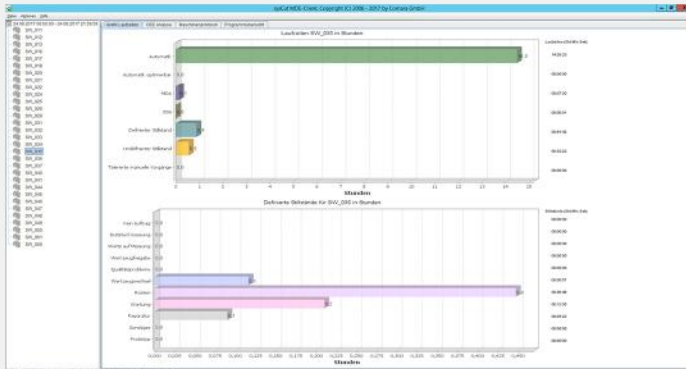
Stückzahlen-Liste für den 16.04.2018	Program	OK-Teile	Abbruch-Teile	Fehlermeldungen
Maschine	Program	OK-Teile	Abbruch-Teile	Fehlermeldungen
HELLER47412	_N_8972253K2_MPF	0 Frisch	1 Spalt	1 x 10717THSK: BITTE UNTERSBEREICH BEGRÜNDET
HELLER47571	_N_HP_1400050_N1_MPF	3 Frisch	0 Spalt	
HELLER49305	_N_HP_6797220_MPF	3 Spalt	0 Spalt	
HELLER49306	_N_HP_6797220_MPF	1 Frisch	1 Nacht	1 x 10717THSK: BITTE UNTERSBEREICH BEGRÜNDET
HÜBIL reit145 A1001625.01	_N_92269793_MPF	0 Spalt	1 Spalt	1 x 10722THSK: Z1-Achse nicht betriebsbereit
HÜBIL reit350 A1001234	_N_92269793_MPF	0 Frisch	1 Frisch	1 x 10722THSK: Halter vor Werkzeugwechsel. Warten mit NC-Start Taste
HÜBIL reit606 Nr. 29				
HÜBIL reit606 Nr. 30				
MAC206 MT Twin2	_N_53001500022_MPF	20 Spalt	3 Spalt	2 x 10725THSK: Bitte beachten: Die Spindelverlagerung ist begrenzt durch die Drehmomentung. Mit dem Ausschub des

Comara sysCut supplies data and information for production planning, production, quality management, controlling and suppliers, which make a new, more effective form of collaboration possible.

Stück	Stücknummer	Produktionsdatum	Produktionsort	Produktionsmenge	Produktionszeit	Produktionsdauer	Produktionsleistung	Produktionskosten	Produktionswert
1	92269793	20120703	HELLER	1	00:00:00	00:00:00	0	0	0
2	92269793	20120703	HELLER	1	00:00:00	00:00:00	0	0	0
3	92269793	20120703	HELLER	1	00:00:00	00:00:00	0	0	0
4	92269793	20120703	HELLER	1	00:00:00	00:00:00	0	0	0
5	92269793	20120703	HELLER	1	00:00:00	00:00:00	0	0	0
6	92269793	20120703	HELLER	1	00:00:00	00:00:00	0	0	0
7	92269793	20120703	HELLER	1	00:00:00	00:00:00	0	0	0
8	92269793	20120703	HELLER	1	00:00:00	00:00:00	0	0	0
9	92269793	20120703	HELLER	1	00:00:00	00:00:00	0	0	0
10	92269793	20120703	HELLER	1	00:00:00	00:00:00	0	0	0

Comara sysCut makes it possible to generate important KPIs such as OEE.

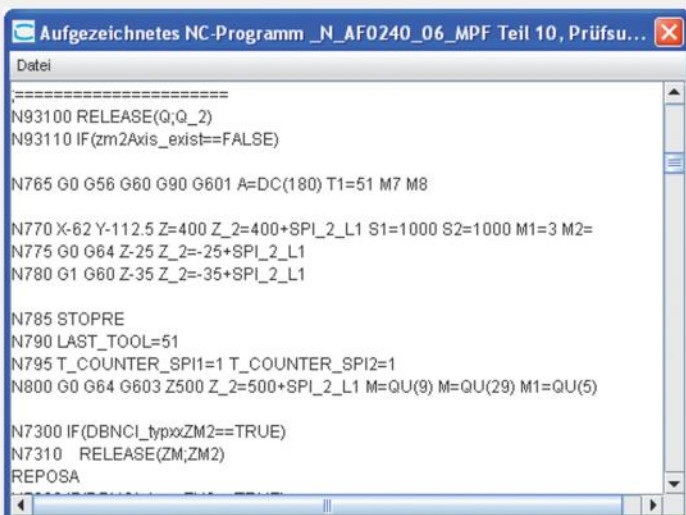
New perspective of your production



With Comara sysCut, machine downtime can be recognised and reported quickly and clearly, enabling issues to be resolved in a short space of time and for preventive measures to be taken.

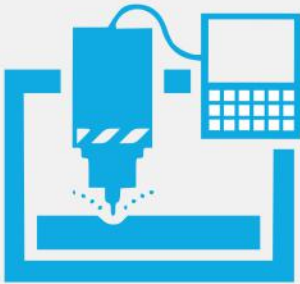


Availability losses (downtime reasons) can be entered directly onto the controller.



Processes are documented in detail.

System requirements



The following controls are currently supported by Comara sysCut (as of 02/2018):

Siemens SINUMERIK:

810D / 840D pl [powerline]

(PCU / eine Spindel)

840Di sl / 840D sl [solutionline] (eine Spindel)

Fanuc 16i/18i/21i/30i/31i/32i

Heidenhain iTNC530/TNC640

Additional server and client (according to number of machines)

Brief info on Comara



- Founded in 2004
- Software company with extensive experience in machine connection, visualization, analysis and optimisation of process data
- Product range includes: Comara appCom, Comara iCut, Comara sysCut, Comara dataGrabber, software development
- Comara products are installed on over **10,000 machines** worldwide (as of 2018)

Comara GmbH

Industriestr. 21 | D-78112 St. Georgen

Phone: +49 (0)7724 9158-0

info@comara.de | www.comara.de